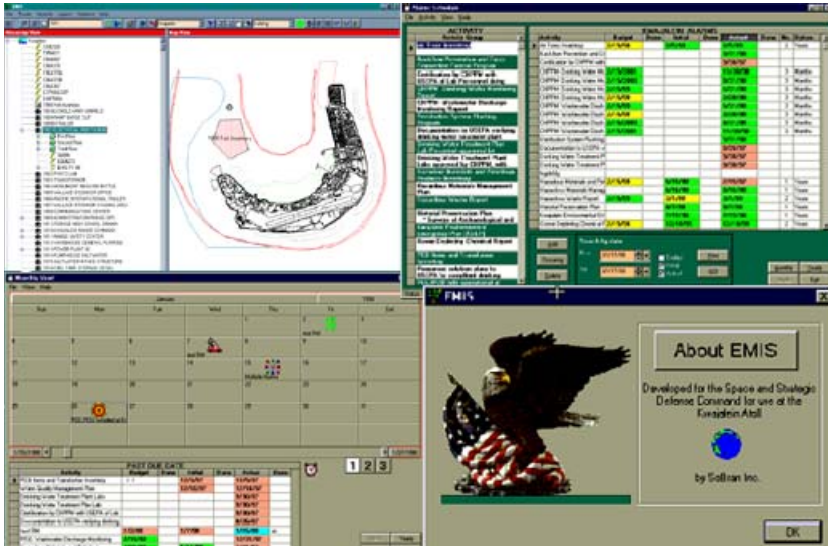


Kwajalein Atoll EMIS System



Project Summary:

Visual Consulting participated in the design and development of the Windows based Environmental Information System (EMIS) used on the U.S. Army Kwajalein Atoll missile base.

The solution involved the implementation of a Windows application using Visual Basic and Microsoft Access as well as:

- a. ESRI Map Objects was used for GIS Mapping.
- b. ODBC was used to access Microsoft Access databases.
- c. Integrated with Microsoft Office Professional Suite.
- d. .Net Remoting and SOAP envelope encryption
- e. Use of several 3rd party custom controls.

EMIS was written as a result of an ever-increasing need for a system that is PC-based, powerful, fast, flexible, easy to use, and inexpensive. Graphic User Interface, or GUI, is a term that is used frequently in the Computing Industry to describe a graphical approach for querying data. EMIS is heavily reliant on a 'point-and-click' approach to providing a manager with quick retrieval of information from either a site map or from a data view form.

The focus of EMIS is not on the engineering aspect but on the presentation of engineering data output, laboratory analysis, multi-media and Geographic Information Systems data.

VISIT US AT WWW.VISUALC.COM FOR MORE INFORMATION



VISUAL CONSULTING®

WHAT DO YOU WANT TO BUILD TODAY?™

Client:

HAZWRAP / Lockheed / U.S. Army

Location:

Oak Ridge, TN /Kwajalein Atoll

Highlights:

- Designed and developed initial prototype and implemented final version of system
- Designed system database and implemented in Microsoft Access
- Utilized ESRI Map Objects
- Currently, EMIS is installed at many DOD and DOE facilities.

PLEASE CALL US FOR MORE INFORMATION AT:

1-800-608-3766

